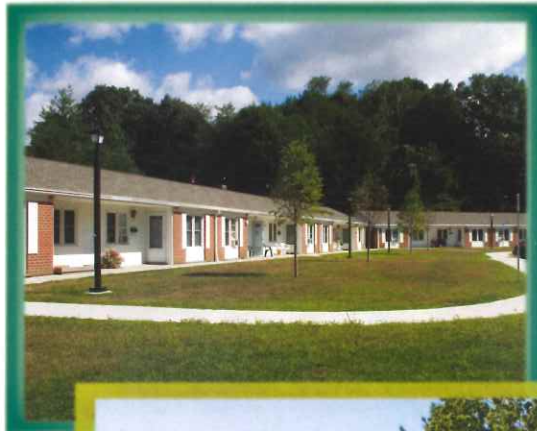


# HOUSING AUTHORITY

of the City of Torrington

110 Prospect Street  
Torrington, CT 06790



## Commissioners

David Murelli . . . . .Chairman  
Mario D'Angelo . . . . .Vice Chairman  
Robert Milano . . . . .Treasurer  
Dianne Cerruto . . . . .Commissioner  
David Knotowicz . . . . .Resident Commissioner  
Claudia Sweeney . . . . .Executive Director



Phone: (860) 482-3581

Fax: (860) 482-5841

TDD: 1-800-545-1833 EXT. 443

# HOUSING AUTHORITY

of the City of Torrington

## Who?

An Executive Director and a Board of Commissioners manage the Torrington Housing Authority:

David Murelli . . . . .Chairman  
Mario D'Angelo . . . . .Vice Chairman  
Robert Milano . . . . .Treasurer  
Dianne Cerruto . . . . .Commissioner  
David Knotowicz . . . . .Resident Commissioner  
Claudia Sweeney . . . . .Executive Director

Federal Regulations govern the Housing Authority.

## What?

Consisting of 430 apartments, some garden style, and others multi-storied. Made up of efficiency and one-bedroom; to accommodate singles, couples and handicapped persons with low to moderate income. Flat rent available at all sites. One small domestic pet allowed with certain restrictions.

## When?

The Housing Authority has been in existence for over 50 years as of 2006. Willow Gardens: holds the distinction of being the State's first elderly complex. Since its completion in 1960, four additional developments have been built. Thompson Heights: completed in 1965. Laurel Acres: completed in 1968 with additional units in 1971. Torrington Towers: completed in 1972 and Michael Koury Terrace: completed in 1983.

## Where?

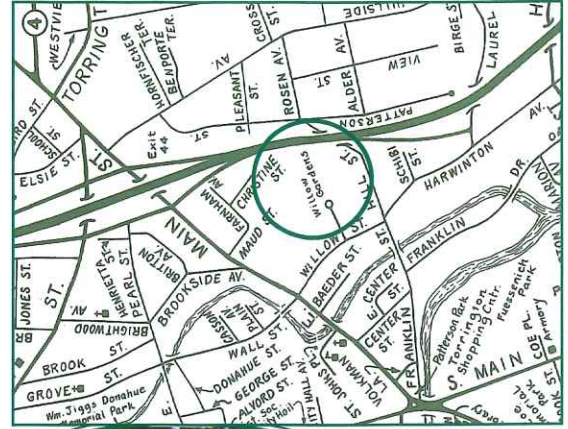
Willow Gardens: located off Willow Street with 39 one-bedroom units. Thompson Heights: located off Litchfield and Albert Streets with 35 units. Laurel Acres: located off Torrington West Street with 56 units. Torrington Towers: located at the corner of Prospect and Summer Street with 200 units and Michael Koury Terrace: located off Route 202 (East Main Street) with 100 units.

## Why?

To provide safe, affordable housing to elderly, disabled, handicapped and other citizens in need.

To apply, call the office at **(860) 482-3581**

# HOUSING AUTHORITY of the City of Torrington



\* see below



## WILLOW GARDENS

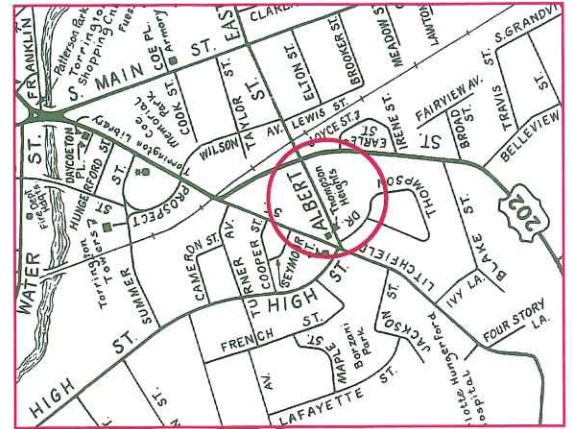
Income Limits: One Person \$54,950  
(After Allowances)

Two People \$62,800

- 39 one-bedroom, garden-type apartments (including 3 handicap accessible units) - approx. 506 sq. ft.
- Convenient to churches, banks and stores.
- Gas heat with individual meters. Monthly utility allowance: \$67.00
- Maintenance free. Refrigerator and stove provided.
- Community building for social activities. Laundry facility on premises.
- Emergency call system, smoke detectors, safety grab bars in bathroom.
- Daily bus service.

# HOUSING AUTHORITY

of the City of Torrington



\* see below



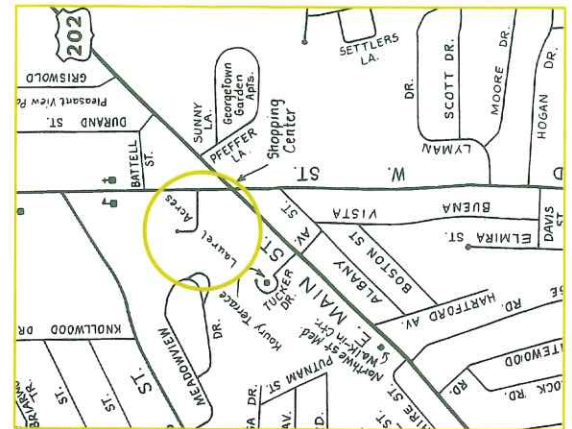
## THOMPSON HEIGHTS

Income Limits: One Person \$54,950  
(After Allowances)

Two People \$62,800

- 35 garden-type apartments: 33 efficiencies - approx. 389 sq. ft.  
2 one-bedroom handicap apartments - approx. 506 sq. ft.
- Convenient to churches, banks, stores and restaurants.
- Electric heat with individual meters.  
Monthly utility allowance: \$61.00 for efficiency and \$67.00 for one-bedroom.
- Maintenance free. Refrigerator and stove provided.
- Community building for social activities. Laundry facility on premises.
- Emergency call system, smoke detectors, safety grab bars in bathroom.
- Daily bus service.

# HOUSING AUTHORITY of the City of Torrington



\* see below



## LAUREL ACRES

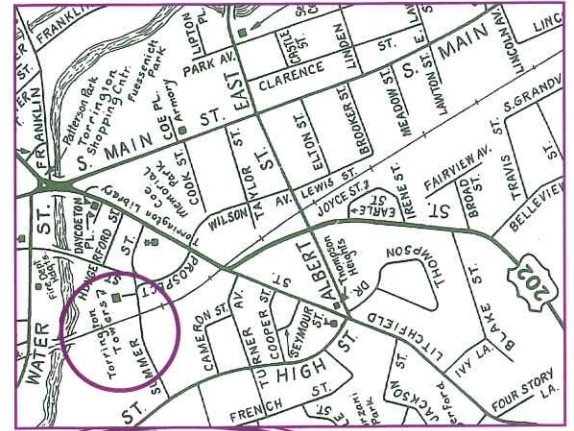
**Income Limits:** One Person \$54,950  
(After Allowances)

Two People \$62,800

- 56 garden-type apartments:
  - 42 efficiencies (including 3 handicap units) – approx. 389 sq. ft.
  - 14 one-bedroom – approx. 506 sq. ft.
- Convenient to churches, banks and stores.
- Electric heat with individual meters.  
Monthly utility allowance: \$61.00 for efficiency and \$67.00 for one-bedroom.
- Maintenance free. Refrigerator and stove provided.
- Community building for social activities. Laundry facility on premises.
- Emergency call system, smoke detectors, safety grab bars in bathroom.
- Daily bus service.

# HOUSING AUTHORITY

of the City of Torrington



\* see below



## TORRINGTON TOWERS

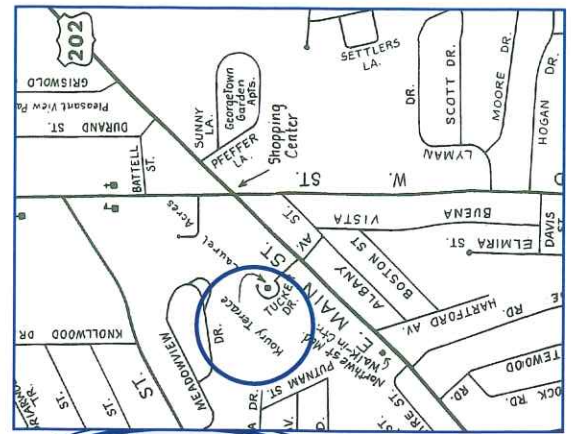
Income Limits: One Person \$54,950  
(After Allowances)

Two People \$62,800

- 200 apartments in a high-rise setting: 173 efficiencies (4 handicap accessible)  
27 one-bedroom (6 handicap accessible)
- Convenient to churches, banks, restaurants, a theatre and stores.
- Utilities included in rent.
- Maintenance free. Refrigerator and stove provided.
- Community room with kitchen, for social activities, and laundry facility all in one building.
- Spacious solaria on each floor.
- Emergency call system, smoke detectors, safety grab bars in bathroom and automatic sprinkler system.
- Resident Coffee Shop.
- Daily bus service.

# HOUSING AUTHORITY

of the City of Torrington



\* see below



## MICHAEL KOURY TERRACE

---

**Income Limits:**      One Person \$54,950      Two People \$62,800  
*(After Allowances)*

---

- 100 apartments situated in five buildings: 85 efficiencies (8 handicap accessible)  
15 one-bedroom (2 handicap accessible)
- Semi-suburban living on a 17 acre site.
- Convenient to churches, banks and stores.
- Individual heat control and hot water included in rent. Electric paid by resident.  
Monthly utility allowance: \$19.00
- Maintenance free. Refrigerator and stove provided.
- Community building, with kitchen, for social activities. Laundry facility on premises.
- Emergency call system, smoke detectors, safety grab bars in bathroom,  
automatic sprinkler system.
- Paved courtyard with area for sunning and sitting.
- Greenhouse with outside planting area.
- Daily bus service.

\* reproduction of Torrington Urban Area Map  
authorized by Harbor Publications, Inc. / Mail-A-Map - 6/2004

**Legend:**

- . . . Willow Gardens
- . . . Thompson Heights
- . . . Laurel Acres
- . . . Torrington Towers
- . . . Michael Koury Terrace



**TORRINGTON**  
 URBAN AREA  
 HARBOR PUBLICATIONS, INC.  
 100 BOX 888 • MADISON, CT 06443  
 ALL RIGHTS RESERVED. REPRODUCTION IN WHOLE OR  
 IN PART BY ANY MEANS IS STRICTLY PROHIBITED  
 COPYRIGHT 2004